

## GRB7

**Catalog Number:** 26133

**Gene Symbol:** GRB7

**Description:** anti-GRB7 Mouse Monoclonal Antibody

**Background:** Grb7 is an adaptor protein that interacts with epidermal growth factor receptor (EGFR) and ephrin receptors. It plays a role in the integrin signaling pathway and cell migration by binding with focal adhesion kinase (FAK). Grb7 gene is commonly co-amplified (present in excess copies) in breast cancers. Grb7 is over-expressed in testicular germ cell tumors, esophageal cancers, and gastric cancers. There are clues that it involved in cell migration and metastatic progression of human esophageal carcinomas.

**Immunogen:** Purified GRB7 protein, human origin.

**Tested applications:** ELISA, WB, IHC

**Recommended dilutions:**

ELISA: 1:1000-1:5000

WB: 1:100-1:1000

IHC: 1:50-1:200

**Concentration:** 0.5mg/ml

**Host:** Mouse

**Clonality:** Monoclonal

**Purity:** Purified from ascites

**Format:** Liquid

**Storage buffer:**

Preservative: no

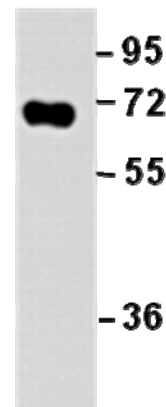
Constituents: PBS (without  $Mg^{2+}$  and  $Ca^{2+}$ ), pH 7.4, 150 mM NaCl, 50% glycerol

**Species Reactivity:** Recognizes GRB7 of vertebrates.

**Storage Conditions:** Store at  $-20^{\circ}C$ . Avoid freeze / thaw cycles

**Western blot:**

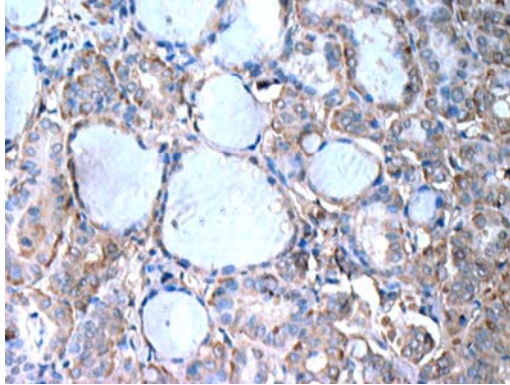
**GRB7 protein**



**WB: Anti-GRB7 mAb**

**Western blot analysis of recombinant GRB7 protein.** Purified His-tagged GRB7 protein was blotted with anti-GRB7 mouse monoclonal antibody (Cat. #26133).

**Immunohistochemistry:**



Immunohistochemical analysis of paraffin-embedded human breast cancer tissue with anti-GRB7 monoclonal antibody (Cat. #26133). Tissue samples were fixed with formaldehyde and blocked with 1% serum for 15 min at 37 °C. Antigen retrieval was by heat mediation in citrate buffer (pH6). Samples were then incubated with primary antibody (1:50 dilution) overnight at 4°C. A HRP-conjugated Goat anti-mouse IgG (1:50 dilution) was used as secondary antibody.